

CHAINS

Possible materials

Type	pH values	Temperatures	Applications
A:	Over 4,5	From +40°C til +80°C	Dirty areas
AS:	Over 4,5	From +40°C til +80°C	Low friction, clean areas
PG:	Over 1,5	From +40°C til +100°C	Dairy operation, cheese form washing
NG:	Over 4,5	From +40°C til +100°C	Special materials, high temp., low friction

All values are guiding and can vary in special environments.

Materials

A	=	POM	● Dark grey
AS	=	POM with silicone	● Orange
PG-S	=	PP with 30% glass	● Black
PG-LG	=	PP with 30% glass	● Light grey
PG-R	=	PP with 30% glass	● Red
NG	=	PBT	● Green

Other colours and materials can be produced for orders.

Pin types and materials

All chains are fitted with a stainless steel 18/8 CrNi Snap-in pin in order to ensure good corrosion and anti slip. All chains can be delivered with AISI 316 pins to secure a high resistance to acids and brine. Upon request, chains can be delivered with other pin types, such as knurled (RTS) and riveted (KR) which both protect against pin walk and provides the possibility of usage in connection with ultra sonics etc. Pins can also be delivered in PP material for metal detection and microwaves etc.

Delievery units and standard shelf lengths

2000	89 links	4,521 Metres	P = 50,8 mm
2500	56 links	3,556 Metres	P = 63,5 mm
3000	40 links	3,048 Metres	P = 76,2 mm



CHAINS



The chains from AA CHAINS were developed specifically for crate conveyors and washers. The first chains were produced more than 50 years ago. The choice of materials is a result of the close collaboration with Europe's leading machine manufacturers in the food industry. In addition, AA CHAINS has also been collaborating with a large number of producers of beverages and dairy products while developing the chain programme.



Drive sprockets

Type of Sprocket

X-	S	=	Drive sprocket
	SG	=	Drive sprocket Split
	U	=	Idler
	UG	=	Idler Split
	MS	=	Modular sprockets
	MSR	=	Sprocket ring for modular sprocket

Type of Chain

S-XXX	2500	=	2500
	2000 PG	=	2500 PG
	820	=	820

Note: Remember PG for AAC PG chains

Number of Teeth

S-2500PG-XX	Z	=	8	=	08		
			Z	=	10	=	10

Note: There is always a minimum of 2 digits.

Bore

S-2500PG-10-XX	Ø20mm	=	20
	Ø25mm	=	25
	Ø30mm	=	30
	Square 40x40	=	S40
	Etc.		

Tolerance and keyway etc.

S-2500PG-10-30-X

0	=	Pilot bore
1	=	H7
2	=	H7 with DS keyway and set screw
3	=	H8
4	=	Pre-bored
5	=	H7 with DS keyway and 2 set screws
6	=	H7 with P9 keyway and set screw

Type of Material

S-2500PG-10-30-2-XXX

214	=	Steel
215	=	Cast Iron
216	=	Polyamide - PA6G - machined
217	=	Nylacast
218	=	Stainless steel AISI 304
219	=	Stainless steel AISI 316
220	=	PEHD 1000
221	=	Cast Polyamide
223	=	Modular sprocket, keyway 304, ring PA6G
224	=	Polyamide with integral steel ring
225	=	Acetal - POM
226	=	LF Acetal - LF POM



Gl. Præstegårdsvej 8 B
DK-8723 Løsning
Tlf. +45 76 74 86 00
Fax +45 76 74 86 01
www.scanbeltcon.dk
aa-chains@scanbeltcon.dk



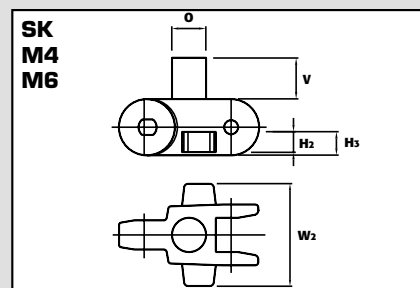
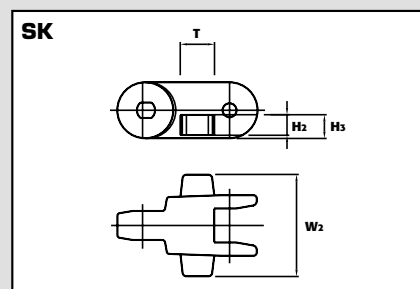
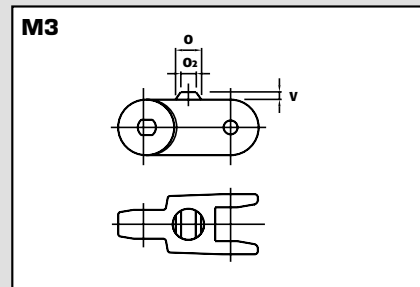
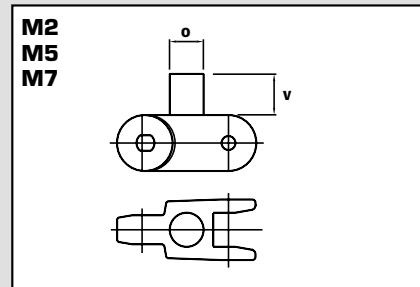
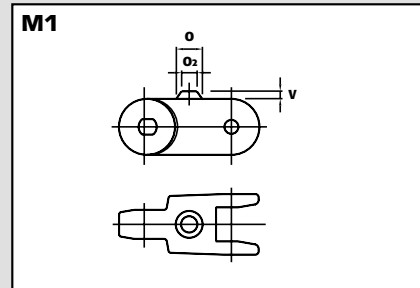
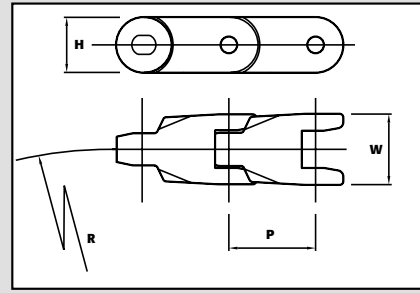
Læsøvej 12
DK-9800 Hjørring
Tlf. +45 98 90 90 88
Fax +45 98 90 96 06
www.scanbeltcon.dk
mail@scanbeltcon.dk

CHAINS

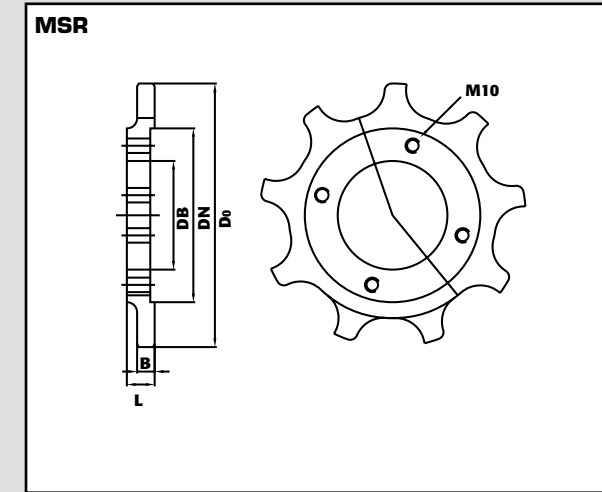
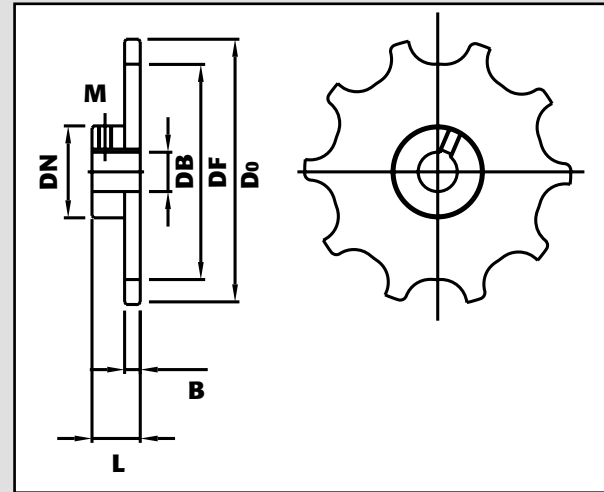
Standard chain types	H mm	W mm	W2 mm	P mm	R mm	Max Load kN	Kg mtr
● 2000 A	32,5	41	50,8	500	6	1,7	
● 2000 AS	32,5	41	50,8	500	5,5	1,7	
● 2000 PG-LG	32,5	41	50,8	500	3,5	1,4	
● 2000 PG-R	32,5	41	50,8	500	3,5	1,4	
● 2000 PG-S	32,5	41	50,8	500	3,5	1,4	
● 2000 PG-LG-SF	32,5	41	50,8	500	3,5	1,4	
● 2000 PG-S-SF	32,5	41	50,8	500	3,5	1,4	
● 2000 RF ¹	30	40	50,8	500	40	5,2	
● 2500 A	40	46	63,5	550	8,5	2,2	
● 2500 A-RTS	40	46	63,5	550	8,5	2,2	
● 2500 A-SK	40	46	74,5	63,5	550	8,5	2,35
● 2500 A-SK-KR	40	46	74,5	63,5	550	8,5	2,35
● 2500 AS	40	46	63,5	550	8	2,2	
● 2500 AS-SK	40	46	74,5	63,5	550	8	2,35
● 2500 AS-SK-KR	40	46	74,5	63,5	550	8	2,35
● 2500 PG-LG	40	46	63,5	550	4,5	1,9	
● 2500 PG-S	40	46	63,5	550	4,5	1,9	
● 2500 NG	40	46	63,5	550	7,5	2,2	
● 2500 NG-SK	40	46	74,5	63,5	550	8,5	2,35
● 2500 NG-SK-KR	40	46	74,5	63,5	550	8,5	2,35
● 3000 A	47	54	76,2	600	11	3	
● 3000 AS	47	54	76,2	600	10,5	3	
● 3000 AS-SK	47	54	66	76,2	600	6	2,5
● 3000 PG-LG	47	54	76,2	600	6	2,5	
● 3000 PG-S ²	47	54	76,2	600	6	2,5	
● 3000 PG-S-SF	47	54	76,2	600	10,5	2,5	

- 1) Open
2) Can be delivered with 90 degree attachments!

Pushers and tab options	O mm	O2 mm	V mm	H2 mm	H3 mm	W2 mm	T mm
2000 M1	Ø17	10	5				
M2	Ø17		16				
2500 M3	Ø17	10	5				
M4	Ø21		15				
M5	Ø21		19				
M6	Ø21		25				
3000 M7	Ø27		20				
2500 SK			15	17	74,5	25	
3000 SK			19		66	30	



SPROCKETS



Sprocket material

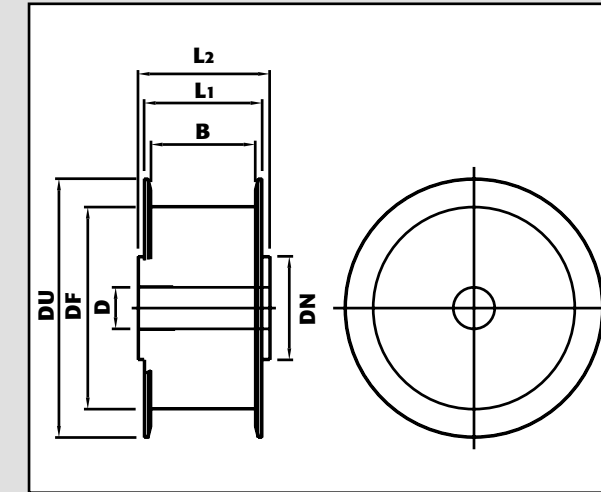
Cast iron GG20
AISI 304
AISI 316
PA 6G

Sprockets can be delivered in non-standard sizes for order. However, not in cast iron.

A, AS, NG, RF Sprocket	DO mm	DF mm	L mm	B mm	DN mm	Kg/ea.
S-2000-10-Ø-X-215	160	128	35	10	71,5	1,6
S-2000-10-Ø-X-218	160	128	35	10	70	1,9
S-2000-11-Ø-X-215	176	144	35	10	71,5	1,9
S-2000-11-Ø-X-218	176	144	35	10	70	2,2
S-2500-09-Ø-X-215	182	142	35	12	71,5	2,2
S-2500-09-Ø-X-218	182	142	37	12	70	2,5
MSR-2500-09-223	182	142	19	12	76	1
S-2500-10-Ø-X-215	202	162	35	12	71,5	2,4
S-2500-10-Ø-X-216	202	156	37	12	70	1
S-2500-10-Ø-X-218	202	156	37	12	70	2,9
S-2500-19-Ø-X-216	389,5	344,5	37	12	100	4
S-2500-15-Ø-X-218	303	264	35	12	100	3,75
S-3000-08-Ø-X-215	192	146	40	15	71,5	2,75
S-3000-08-Ø-X-218	192	146	40	15	70	3,6

PG Sprocket	DO mm	DF mm	L mm	B mm	DN mm	Kg/ea.
S-2000PG-10-Ø-X-218	166	134	35	10	70	2
S-2000PG-10-Ø-X-219	166	134	35	10	70	2
S-2000PG-10-Ø-X-220	166	134	35	10	80	0,75
S-2500PG-09-Ø-X-218	186	151	37	12	70	2,5
S-3000PG-08-Ø-X-218	202	156	40	15	70	3,6
S-3000PG-09-Ø-X-218	228	182	40	15	70	3,6

IDLERS



Idler	DU mm	DF mm	L1 mm	L2 mm	B mm	DN mm	Kg/ea.
U-2.2500-Ø-X-221	187	146	58,5	65	48,5	51	0,5
U-2.2500-Ø-X-220	187	146	58,5	65	48,5	51	1
U-2.2500SPC-Ø-X-221	187	146	58,5	65	48,5		0,5
U-2.2500SK-Ø-X-216	187	146	85,5	65	75,5		1,6
U-3000-Ø-X-216	187	146	70	65	58		1,4
U-3000PGV-Ø-X-216	187	146	70	65	64		1,35

Accessories

We have a wide selection of wear profiles and curves as well as chain guides for all types of chains. Chains with mounted attachments etc. can be delivered. Furthermore, extended pins can be delivered.

