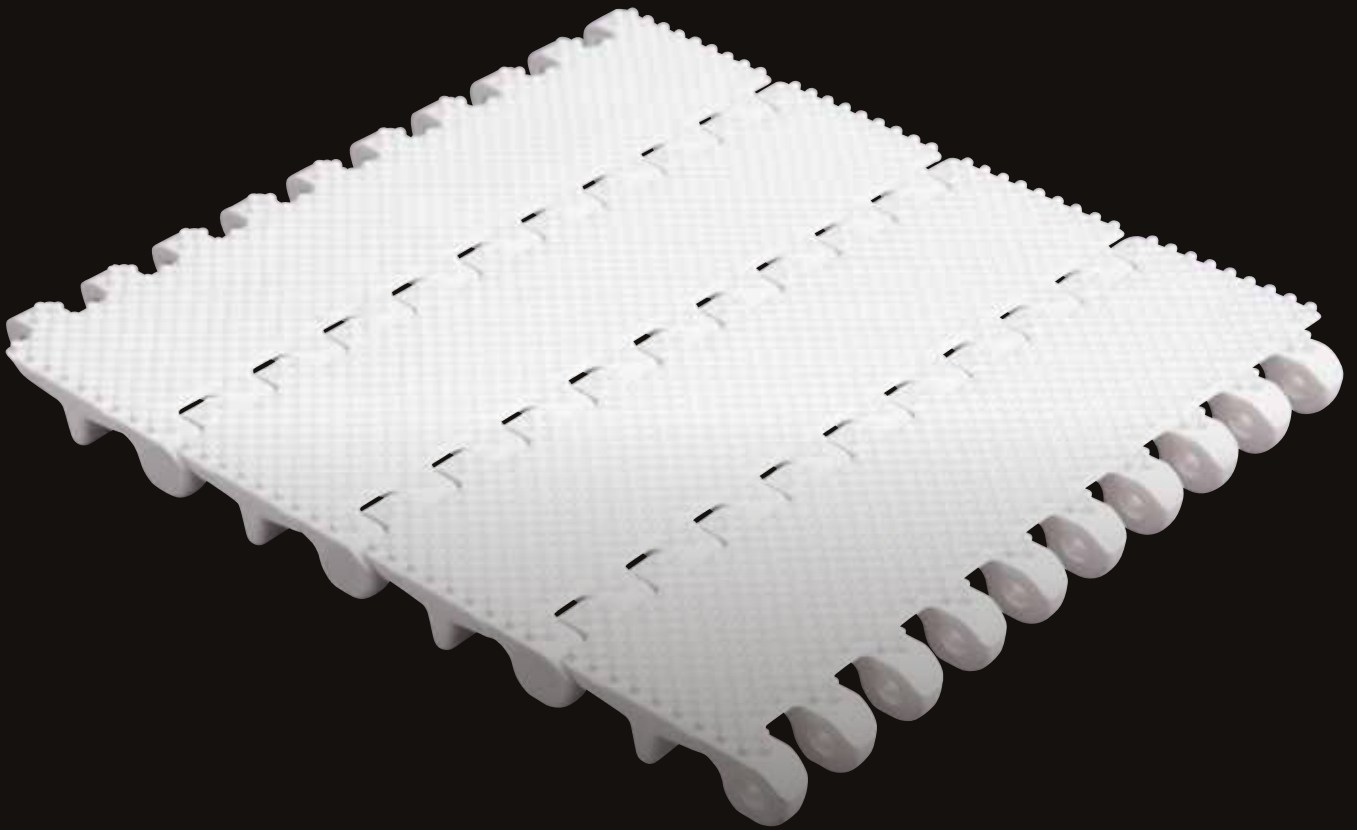


MODULAR BELTS

CANDY INDUSTRY



**SCANBELT**  
...keeping industry moving...

Providing the most hygienic belts on the market with a wide range of belt surfaces and accessories, ScanBelt can offer the ultimate solution to any special task within the confectionery industry







## STICKY PRODUCTS

Great non-stick properties make ScanBelt modular belts ideal for sticky and very sticky products, including chocolate, chewing gum, oily and sugar coated candy.

The design of belt, including many different surfaces and accessories, minimizes the contact between belt and product. This combined with effective non-stick additives in the materials furtherly reduce the risk of products sticking to the belt.



## CANDY AND SUGAR PRODUCTS

ScanBelt provides optimal solutions with long-lasting belts for transporting sugar coated sweets.

The correct material combination between belt and rods and the appropriate openings for sugar drainage reduce the abrasion on the belt caused by the sugar.



## PROCESSING AND DISTRIBUTION

With more than 25 years of experience, ScanBelt offers a wide range of hygienic conveyor belts covering all parts of the process from candy manufacturing, forming, cooling, coating and elevation of the goods to wrapping and palletizing them.

Regardless of the type of candy and capacity that you need to transport from A to B, we can help you make the distribution an easy task.



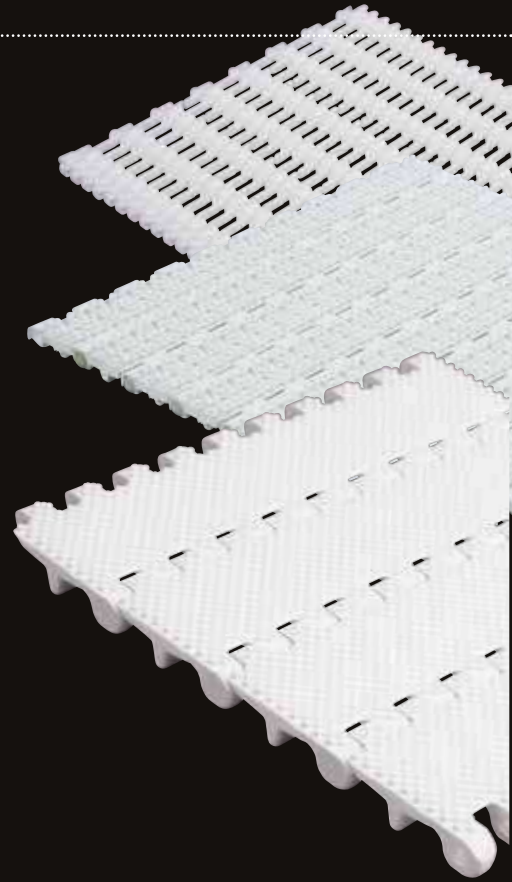
## PACKAGING AND PALLETIZING

A complete range of ScanBelt modular belts ensures efficient and smooth transport of all shapes and colors of candy and chocolate all the way to the wrapping and packaging part.

Advantages such as easy installation, durability and great sprocket engagement reduce down time and costs, making ScanBelt ideal for confectionery applications worldwide.

## SCANBELT - KEEPING INDUSTRY MOVING...

- Great non-stick properties
- Cleanability
- Superior sprocket engagement
- Easy assembly and disassembly
- Durability
- Effective belt surfaces
- Wide range of locking systems
- Extensive numbers of accessories such as side guards, flights, ribbed flights and hold downs
- Complete product range covering all processes of the candy industry





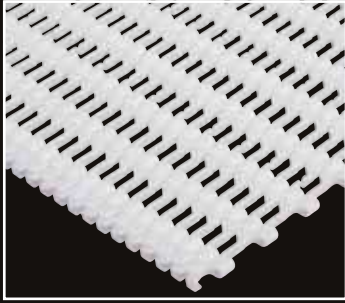
## FLEXIBILITY ABOVE ALL...

S.06

A true MICRO-PITCH with a 6,25 mm pitch. Designed for light transport. It is able to go around a 6 mm nose bar for very tight transfers. This series is assembled without rods.

S.06-401

EASY TO CLEAN



06-401 Open flat top. For extremely small transfers. Gentle transport of sweets and chocolate

- Smallest pitch in the market
- Runs on static bars down to 6 mm
- Easy to clean
- Positively driven - no tracking issues
- No frayed belt edges

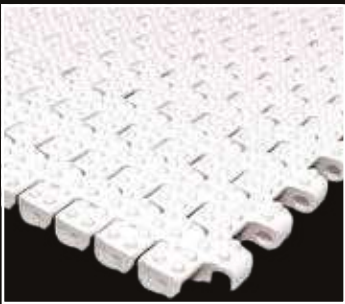


S.12

A true MINI-PITCH with a 12,5 mm pitch. Designed for light transport. It is able to go around a 14 mm nose bar for very tight transfers. Placement of sprockets is flexible across the belt width, i.e. no risk of assembling or installation mistakes. The links are designed with open rod access and are consequently very easy to clean. The belts can be delivered with flights and rubber or nub top surface.

S.12-438/448

EASY TO CLEAN



12-438 Closed 2 mm nub top surface for minimum contact. EASY TO CLEAN for transport and processing



12-448 Closed top with an inverted diamond pattern to avoid products sticking to the belt

- Suitable for tight transfers and small pitch sprockets
- Runs on nose bars down to 14 mm
- Easy to clean
- Ideal for processing and transport
- Available with ScanBelt's unique, revolutionary self-lock, one piece rod retention system



ACCESSORIES

FOR TECHNICAL DETAILS PLEASE VISIT:

[WWW.SCANBELT.COM](http://WWW.SCANBELT.COM)

## S.25 SERIES

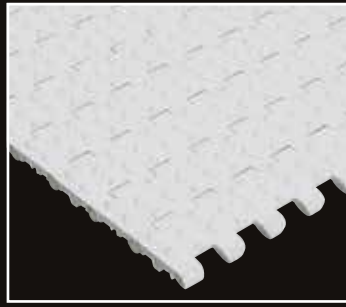
The S.25 is a range of 25 mm pitch belts designed to solve all aspects of light to medium transport. Belts with very good cleanability and non-stick properties for the confectionery industry. The series consists of 17 belt types with distinct characteristics when it comes to open area and surface structure. Closed and open belts with smooth or structure surface. Raised ribs and rubber surface. An effective drive system with side guiding and an excellent grip in the belt. Fully bi-directional sprockets for reversible conveyors.

S.25-801/830/836

EASY TO CLEAN



25-801 Open surface for drainage. EASY TO CLEAN for sugar coated candy and other applications requiring drainage



25-830 Closed cone top surface. EASY TO CLEAN for sticky or frozen products and positioning for small inclines



25-836 Perforated nub top surface for light drainage and minimum contact. EASY TO CLEAN for sticky products

- Super high degree of cleanability
- Even lines on the back side ensure uninterrupted flow of cleaning fluids
- Conical link design maximizes the access for cleaning around the hinge area
- Light to medium transport of smaller products
- Large variety of surfaces, including flat, perforated flat top and different cone and nub top patterns
- Available with ScanBelt's unique, revolutionary self-lock, on piece rod retention system

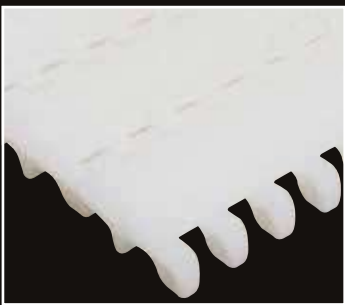


## S.50 SERIES

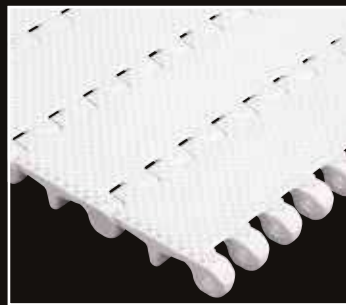
The S.50 series is a range of 50 mm belts designed for medium to heavy transport. The series consists of 19 types of belts with different surface structures and openings. Different nub top structures with nonstick properties. Effective sprocket systems with side guiding. Fully bi-directional sprockets for reversing belts.

S.50-830/838

EASY TO CLEAN



50-830 Closed nub top surface. EASY TO CLEAN for various confectionery applications



50-838 Closed nub top surface for minimum contact between belt and candy, EASY TO CLEAN for sticky products

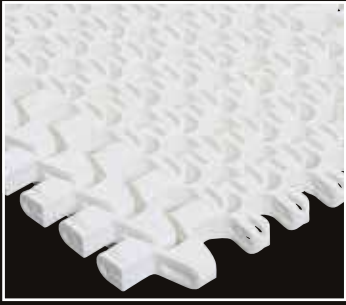
- 50 mm easy to clean series
- Conical link design maximizes the access for cleaning around the hinge area
- Variety of surfaces for oily and sticky products
- Extensive number of accessories, such as flights, side guards, hold downs etc.
- Available with ScanBelt's unique, revolutionary self-lock, one piece rod retention system



## RADIUS BELTS

25 years in spiral and radius belt business has resulted in a range of 25 and 50 mm pitch belts going in curves. Belts suitable for both J-curves and S-curves are available. The 25 mm range has a market low collapse factor (from 1,5:1 x belt width) without compromising the pulling force and product placement. Side guards, line separators, friction top and hold downs/hooks are all available in this range.

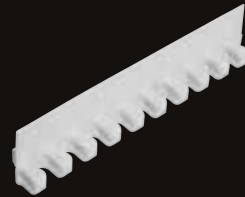
### S.100R/S.101



S.100R Open radius belt with heavy outer links on both sides. Steel reinforcements or moulded-in side guards can be supplied



S.101 Open radius belt with a very low collapse factor. Can run in S- and J-curves for spiral coolers/freezers



- Collapse factor starting from 1,5 x belt width
- References dating back to 1988 for ScanBelt radius belts - both S-curves and J-curves
- Varied accessories, such as high friction, side guards and steel reinforcements

## MATERIALS

The correct choice of belt materials is essential for a successful and sustainable conveyor in confectionery production

- **Polyethylene (PE)** is a high impact resistance material. PE handles operational temperatures between  $\pm 73^{\circ}\text{C}$  and  $+ 66^{\circ}\text{C}$  and is thus suitable for installations in both cold and warm areas. It is ideal for applications that require a flexible belt material with superior impact strength
- **Polypropylene (PP)** is a harder material with a good pulling force. PP can handle operational temperatures from  $+15^{\circ}\text{C}$  up to  $+ 100^{\circ}\text{C}$ . It is suitable for installations in high range temperature areas as well as boilers and dryers to a certain degree
- **Polyacetal (POM)** is a strong all-round material with a working temperature from  $\pm 43^{\circ}\text{C}$  to  $+95^{\circ}\text{C}$ . This material has great pulling force and a hard surface, which gives a reduced friction to both the support and the product
- **All standard materials are approved for direct food contact**
- Wear resistant sprocket materials are used





**Efficiency ▶ Experience ▶ Excellence**

Supplier to major candy and chocolate productions worldwide

Keeping global industries moving for more than 25 years

**SCANBELT**  
...keeping industry moving...

Læsøvej 12 • DK-9800 Hjørring  
Tlf. +45 98 90 90 88 • Fax +45 98 90 96 06  
[www.scanbelt.com](http://www.scanbelt.com) • [mail@scanbelt.com](mailto:mail@scanbelt.com)

